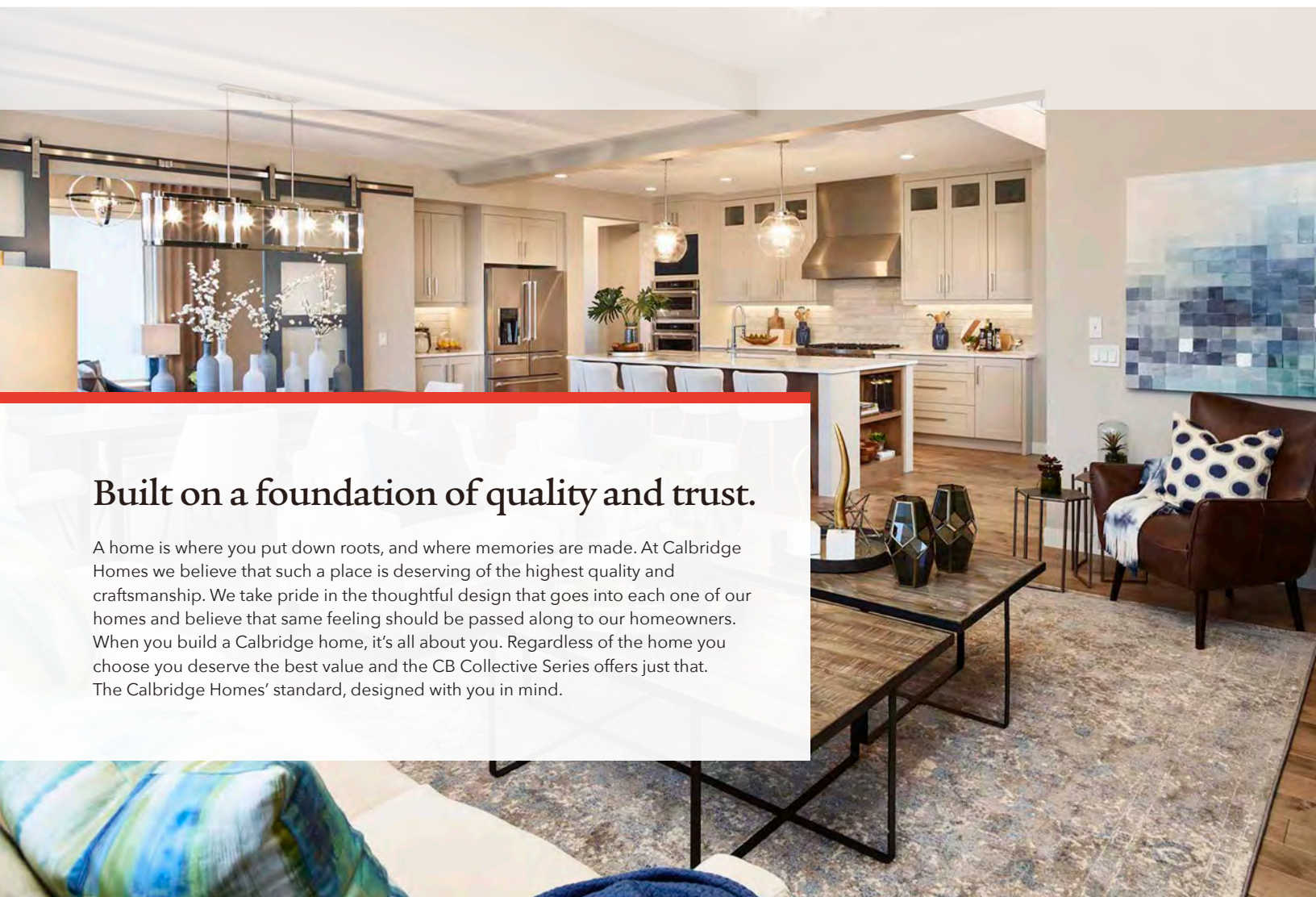




CB

COLLECTIVE SERIES



Built on a foundation of quality and trust.

A home is where you put down roots, and where memories are made. At Calbridge Homes we believe that such a place is deserving of the highest quality and craftsmanship. We take pride in the thoughtful design that goes into each one of our homes and believe that same feeling should be passed along to our homeowners. When you build a Calbridge home, it's all about you. Regardless of the home you choose you deserve the best value and the CB Collective Series offers just that. The Calbridge Homes' standard, designed with you in mind.

CALBRIDGE
— HOMES —

INCLUDED SPECIFICATIONS

KITCHEN

1 ¼" stone countertops throughout with your choice of 7 edge profiles

Blanco stainless steel undermount sink with Delta Osler faucet in chrome finish

Stainless Steel Appliance Package - Front Attached Garage Homes

- Whirlpool French door fridge (25.4 cubic ft) with exterior water and ice dispenser
- Whirlpool gas slide in range with front controls
- Whirlpool top control dishwasher with fan dry
- Faber 30" T-shaped chimney hood fan with backsplash tile to ceiling height
- Panasonic built-in microwave with cabinet tower

Stainless Steel Appliance Package - Laned Homes

- Whirlpool bottom-mount fridge with ice maker
- Whirlpool electric glass top freestanding range
- Whirlpool top control dishwasher with fan dry
- Whirlpool microwave/hood combination



FLOORING

Main level: your choice of 7½" laminate, 5¾" vinyl plank, or 5" hardwood

Multiple collections and textures of carpet from Shaw and Dwellings, all installed with 8lb underlay

Extensive collection of 12" x 24" tile flooring

CABINETRY

Maple, oak, or paint-grade MDF

8 decorative door styles to choose from

42" high upper cabinets with your choice of 4 crown moulding styles

Veneered kitchen island face to match cabinet finish

Staggered 24" deep cabinet over fridge

2 banks of pot and pan drawers to kitchen

1 bank of 3 drawers to continuous master ensuite vanities

1 bank of 2 drawers to individual master ensuite vanities

34" high bathroom vanities

Durable cabinet interiors (hardrock maple or white)

Full-extension soft-close drawers

BATHROOMS

Master Ensuite - Front Attached Garage Homes

- Acrylic base shower with tiled walls to ceiling height (6 mm glass door/enclosure, 80" height)
- Freestanding or built-in soaker tub (as per plan)
- 1 ¼" stone countertops with your choice of 7 edge profiles
- Dual sinks, American Standard Ovalyn Undermount
- 6" of vanity backsplash tile
- Counter width mirror, 42" high

Main Bathroom & Master Ensuite - Laned Homes

- Fiberglass tub/shower enclosure with tile surround to ceiling height
- 1 ¼" stone countertops with your choice of 7 edge profiles
- American Standard Ovalyn Undermount sink
- 6" of vanity backsplash tile
- Counter width mirror, 42" high

Half Bathroom

- Pedestal sink
- Ceiling height mirror

Delta Lahara Series bathroom fixtures in chrome finish

American Standard Colony Elongated Toilets

Taymor bathroom hardware in chrome finish, multiple style options



CONSERVING ENERGY

Triple glazed windows with single Low-E coating & 2 argon-filled air spaces

50 US gallon gas hot water tank

96% high efficiency furnace

Active Heat Recovery Ventilation system (HRV)

Honeywell Wi-Fi enabled programmable thermostat

R44 attic insulation with vapour barrier

R22 exterior wall insulation with vapour barrier (exterior walls above grade)

R12 foundation perimeter wall insulation with vapour barrier

2lb spray foam applied to rim joists, cantilevers, and developed living space above garage

Inline bath exhaust fans (timer to full bathrooms)

EnerGuide rating guaranteed to meet or exceed Alberta Building Code reference house and confirmed with airtightness test performed by third party Energy Advisor



HRV  R44

R22



HOME EXTERIOR & GARAGE

Wood grain fiberglass front door with Weiser Branton front door lockset with SmartKey capability in brushed chrome finish

Carriage House Series steel insulated garage door(s) with belt drive opener (2 remotes per door) & keyless entry pad

16" on centre framed exterior walls

Asphalt roof shingles with Limited Lifetime warranty

Low maintenance exterior finish

Pre-cast concrete front steps & landing (front attached garage homes)

DMX foundation wrap

Exterior soffit plug with interior switch

2 exterior hose bibs

1 cold tap to garage

INTERIOR FINISHES

Knockdown ceilings throughout

Wood capped western stringers to interior stairs

Railing throughout main level with your choice of maple, oak or paint-grade

3" paint-grade casing and 4" paint-grade baseboards, multiple styles

Carrera style, smooth finish paint-grade interior doors

Weiser interior door hardware in brushed chrome finish with your choice of 4 styles

Premium quality eggshell acrylic latex paint throughout with one primer coat, and two finish coats

LIGHTING & ELECTRICAL

Generous lighting allowance to personalize your fixture selections

Recessed 5" white trim LED pot lights (as per plan)

Decora switches and outlets throughout

3 phone outlets, 3 cable outlets

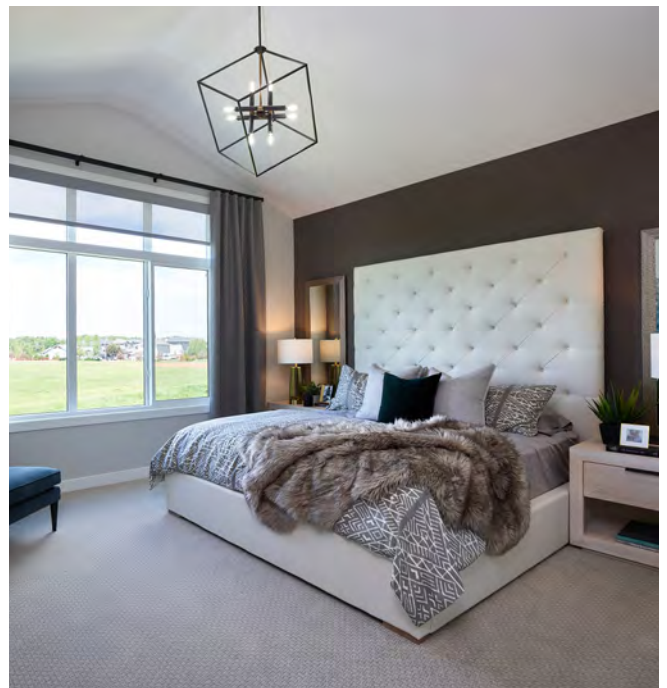
100 amp 64 circuit panel

FIREPLACE

Great room gas fireplace (excl. laned models), multiple design options

Maple, oak, or paint-grade finishing details, 12" x 24" tile surround

Faux log or contemporary glass insert style option

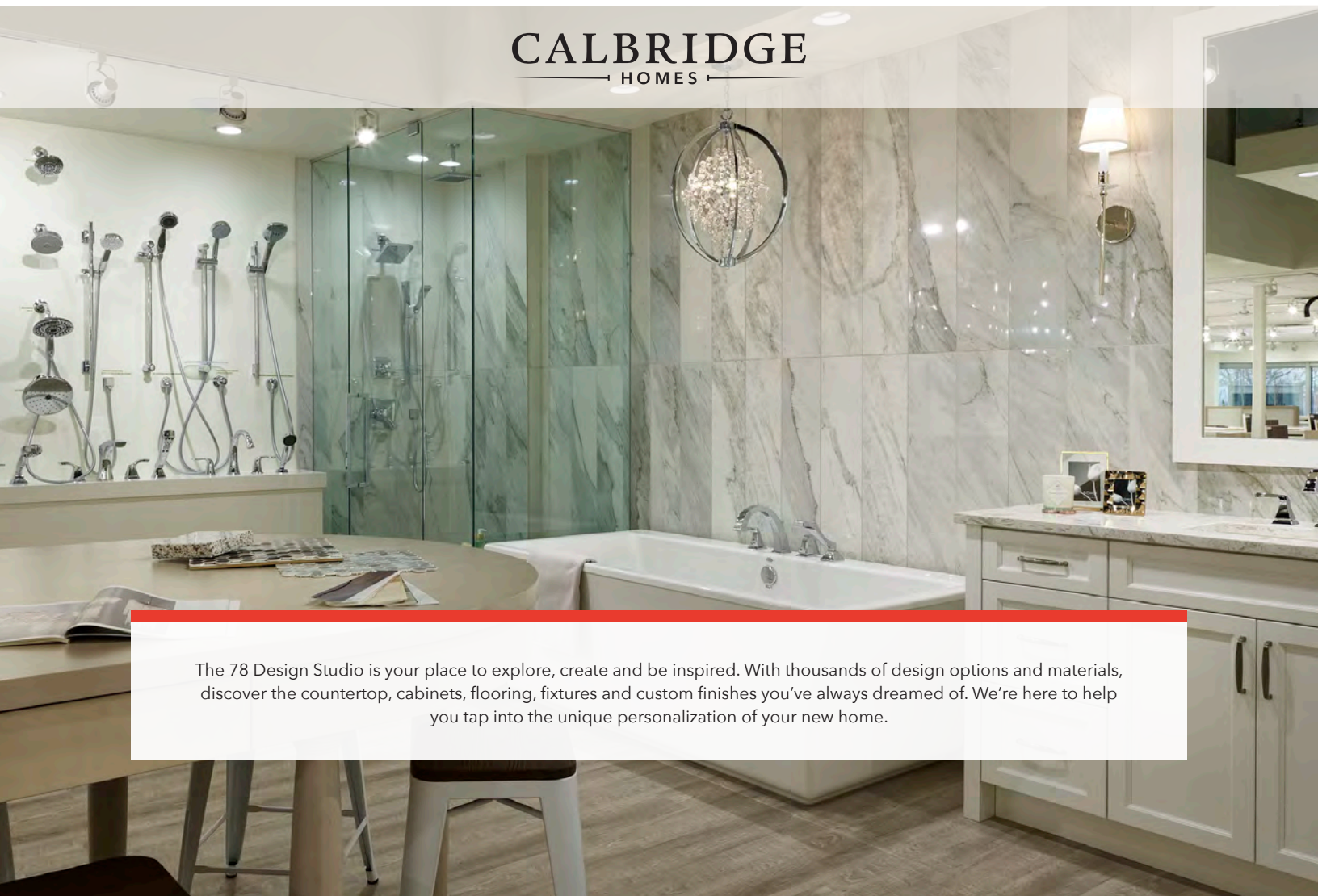




S E V E N T Y E I G H T DESIGN STUDIO

by

CALBRIDGE
HOMES



The 78 Design Studio is your place to explore, create and be inspired. With thousands of design options and materials, discover the countertop, cabinets, flooring, fixtures and custom finishes you've always dreamed of. We're here to help you tap into the unique personalization of your new home.



CalbridgeHomes.com